



1-2-3 Speak®

“Enabling Non-Verbal people
to Communicate”

Supported by The Jones Foundation

Up to 4,000 words or
phrases
in three touches

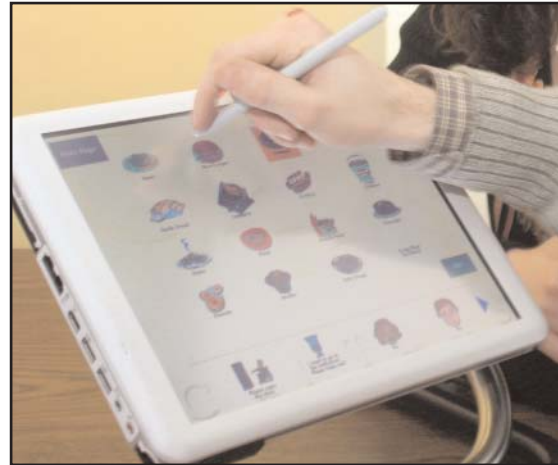
HOW TO ORDER

Go to
www.1-2-3Speak.com

Or call

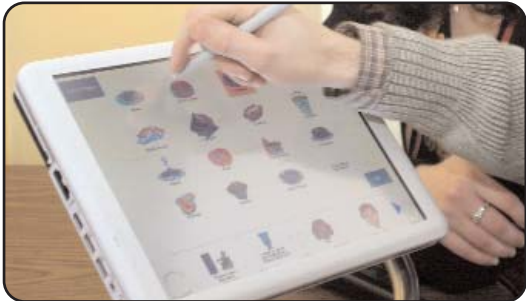
Sonha S. Mason
301-445-3350x197
CHI Centers, Inc.
10501 New Hampshire Ave
Silver Spring, MD 20903

Email Info@1-2-3Speak.com



CHI Centers Inc.
10501 New Hampshire Avenue
Silver Spring, MD 20903
Tel 301.445.3350
Fax 301.439.8117 TDD 301.439.5366
www.1-2-3Speak.com
Info@1-2-3Speak.com

- 1-2-3 Speak® provides communication assistance to:
 - Non-verbal individuals
 - Individuals with limited speech
 - Stroke victims, Throat Cancer victims
 - Individuals with English as a Second Language
- 1-2-3 Speak® operates on:
 - Pen/Touch tablet computer
 - Touch screen laptop
 - Standard desktop computer with a mouse or touch screen monitor
 - Wheelchair mounted computer system
 - Hand held computer
- 1-2-3 Speak® software utilizes photos and icons. Words or phrases are activated when the picture or icon is activated by touch.
- The system can speak up to 4,000 words or phrases within three touches and can be customized to reflect the need and personality of the user.



Contact: Sonha S. Mason
 123Speak@chicenters.org
 301-445-3350x197

Please download the demo movie at
www.1-2-3Speak.com

This brochure is printed at CHI Centers Inc.

CHI Centers, Inc. provides services to over a thousand clients over a wide range of disabilities. 1-2-3 Speak®, an Assistive Technology software, was developed to provide communication assistance for our clients.

CHI Centers was founded in 1948 by a group of dedicated, concerned parents who recognized the need to join forces with other parents of children with cerebral palsy to provide for the special needs of these children through training, education, and legislative advocacy.



CHI Centers is a private, nonprofit organization with an operating budget of \$17 million and dedicated to furthering the independence, self-reliance and dignity of individuals with developmental disabilities. CHI Centers serves on a daily and regular basis approximately 1000 individuals whose diagnoses include: mental retardation, cerebral palsy, hearing impaired, blindness, physical disabilities, medically fragile, behaviorally challenged, intellectually challenged and multiple disabilities.