

What is 1-2-3 Speak® Handheld?

1-2-3 Speak® Handheld is an augmentative communication software program (speech generating software) that provides up to 1,700 spoken words or phrases accessible within three key strokes. With three key strokes, 1-2-3 Speak can be enabled to announce that the user wants to go to the library, get a haircut, and have dinner with dad at a favorite restaurant. Images of family members and friends, as well as new other personal icons, also can be incorporated into the program. A high quality male or female voice is provided.

1-2-3 Speak® Handheld Package

- 1-2-3 Speak Handheld software CD
- 1-2-3 Speak preloaded HP iPaq
- Auxiliary carrying case with a built-in speaker*
- External battery recharger for the built-in speaker
- Hp iPaq docking station with cables
- 1-2-3 Speak Handheld manual

*Note: The Speaker pouch has a blue screw that controls speaker volume.

How to Use iPaq for 1-2-3 Speak®

Note: Please click only once for each prompt. If you double click, more than one copy of 1-2-3 Speak will be open and the sound will not work properly.

1. Turn on the HP iPaq by pressing the power button.
2. Click on Start by either using your finger or iPaq pointer (the pointer is located in the right side).
3. Click on File Explorer.
4. 1-2-3 Speak Main Categories screen will appear, and now you can start using 1-2-3 Speak Handheld system.

Troubleshooting

If the sound does not work, that means more than one copy of 1-2-3 Speak program is open in the system. Please follow the instruction below to have sound working properly.

1. Go to the Start screen, the very first screen of the iPaq.
2. Click on the icon to the right to the battery indicator.
3. On the Setting screen, click on Running Program.
4. Click on Stop All icon and click on Ok button at the top right side.
5. Restart 1-2-3 Speak from the beginning.

or

Click on **1. Start 2. Settings 2. System (bottom menu) 3. Memory 4. Running programs (bottom menu), 4. Stop All 5. Ok (top right) 6. Restart**

Using 1-2-3 Speak Handheld

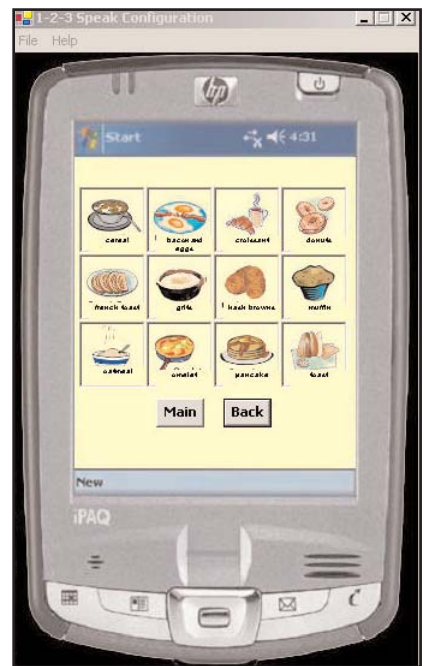
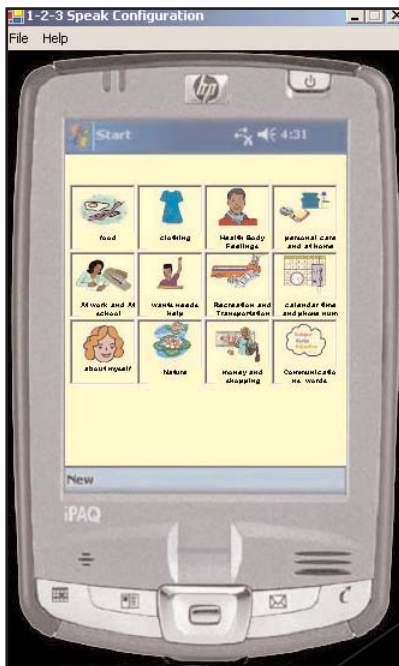
Main Categories are displayed on the first screen. Groups within a Category can be found by clicking on the desired icon on the Category screen. Items within a Group can be found by clicking on the desired icon on the Group screen.

You can use the Configuration Program (from your main computer system) to customize the arrangement of Categories, Groups, and Items on the computer screen. Icons can be deleted or added through the use of the Configuration program. The desired text to be spoken and screen text are also typed through the use of the Configuration program.

1st Screen - Categories

2nd Screen - Groups

3rd Screen - Items



- Main** If you click on the **Main** icon, you will go to the Categories screen. The **Main** icon appears on the GROUPS and ITEMS screens.
- Back** If you click on the **Back** icon, you will go to the Groups or Categories screen. The **Back** icon appears on the GROUPS and ITEMS screen.

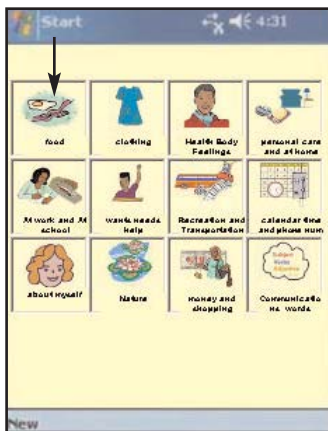
Close View of Each Screen

Example:

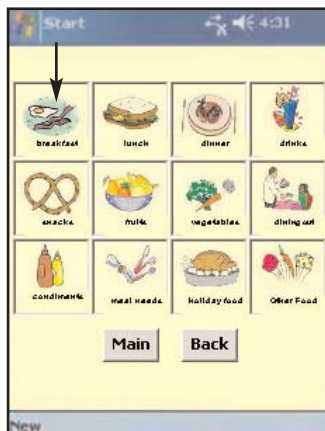
Below diagram shows that the user wants to have cereal for breakfast.

First, Food icon was selected, then the Breakfast icon, and finally the Cereal icon is selected.

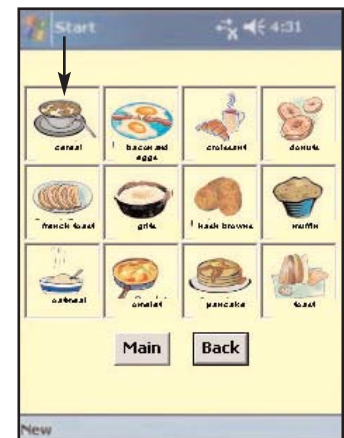
1. Categories screen



2. Groups screen



3. Items screen



PERSONALIZING 1-2-3 SPEAK HANDHELD

1. Install iPaq software.
2. Install 1-2-3 Speak Handheld software on your windows XP or Vista computer. The computer will act as a base system for updating the 1-2-3 Speak Handheld.

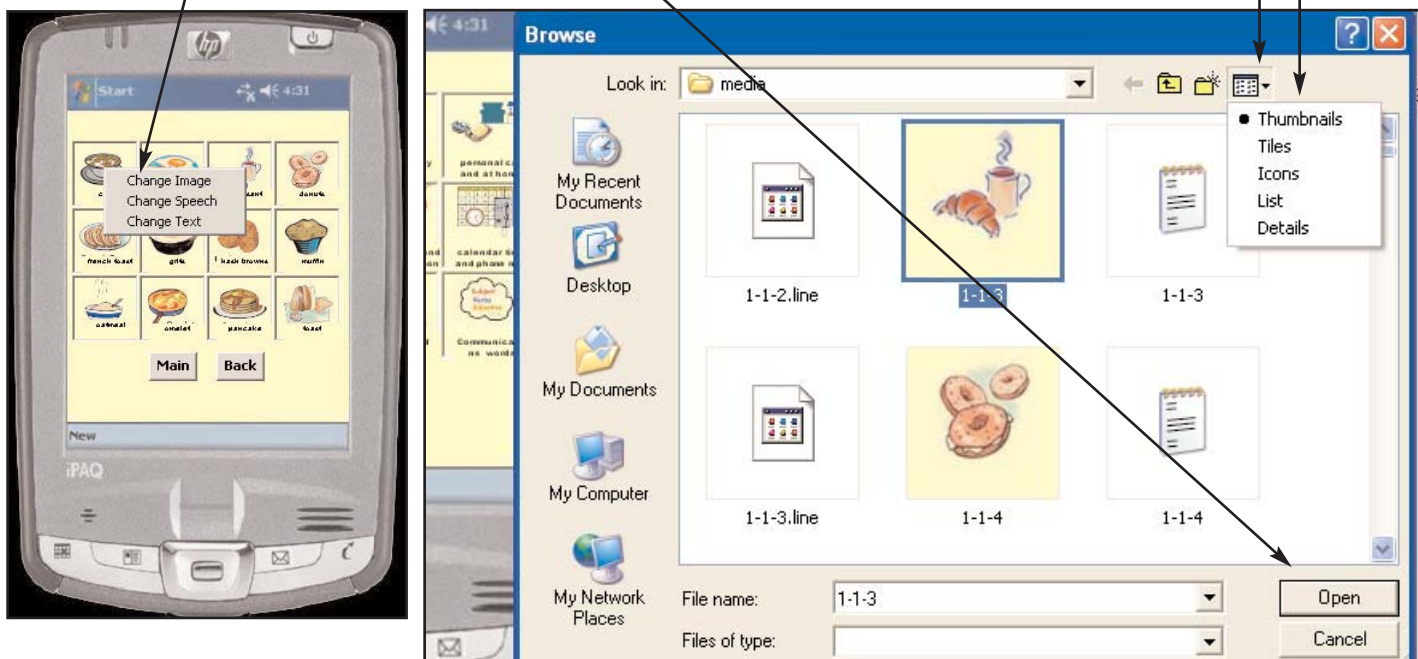
After installation, you will find the shortcut icon below. Double click on the short cut to start making changes to your 1-2-3 Speak.



Note: Only 12 icons can be displayed at any one time. However, the number of available Categories, Groups, or Items you can store to choose from is unlimited.

How to Change an Icon

1. Right click on the desired icon.
2. Click on Change Image.
3. Go to Program Files/Pocket PC 1-2-3 Speak/Media* (Read next page for icon information)
4. Click on View Menu to see the icons in Thumbnail view
5. After selecting a new icon, click Open.



1-2-3 Speak Icons

**1-2-3 Speak Icon: Icons are stored at Program Files/Pocket PC 1-2-3 Speak/Media folder.
Please refer to the icon index below.*

1-2-3 Speak Handheld icons are organized in number system.

#1s are Food icons

#2s are Clothing

#3s are Health, Body, Feelings

#4s are Personal care and Home

#5s are At work and at School

#6s are Wants, needs, Help

#7s are Recreation and Transportation

#8s are Calendar, Time, Phone numbers

#9s are About myself

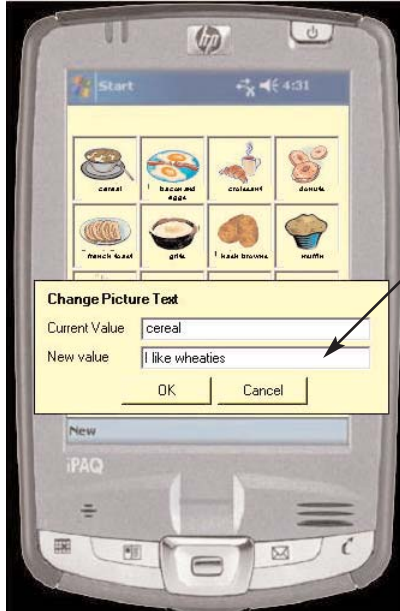
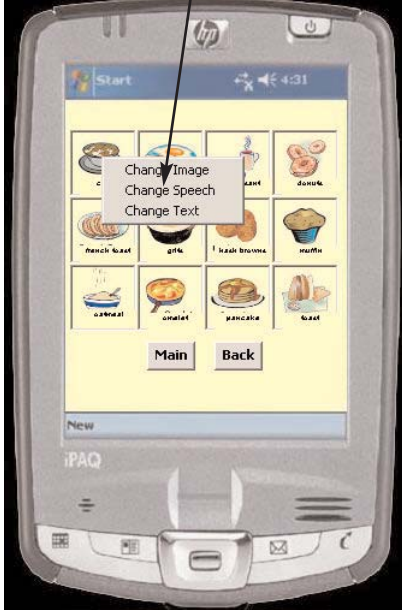
#10s are Nature

#11s are Money and Shopping

#12s are Communications and Words

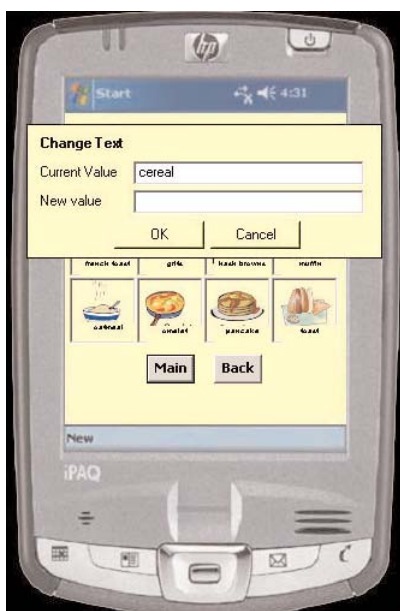
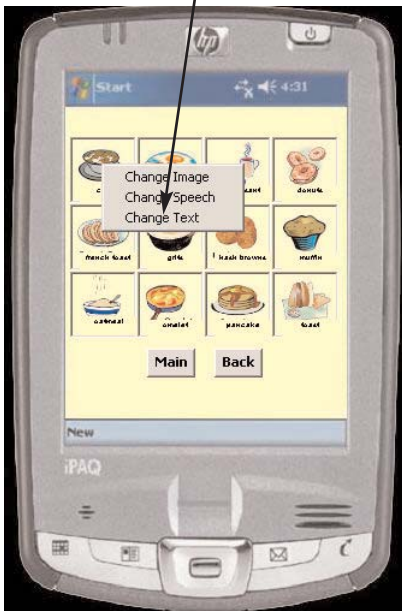
How to Change Speech

1. Right click on the desired icon.
2. Click on Change Speech.
3. Type in new speech on New Value box. The example below shows that the user typed in *"I like Wheaties"*



How to Change Text on the Screen

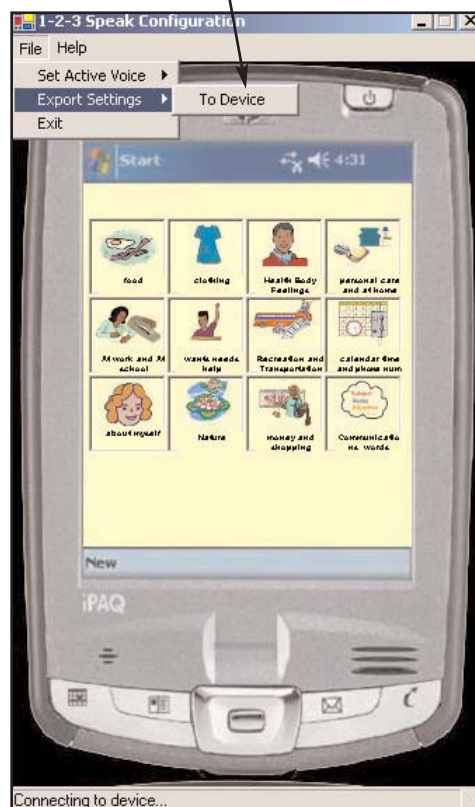
1. Right click on the desired icon.
2. Click on Change Text.
3. Type in new speech on New Value box.



Synchronizing 1-2-3 Speak Handheld

After making changes to your 1-2-3 Speak, you must synchronize your handheld with your computer system. This process depending on the speed of the base station may take up to one hour to complete.

1. Put in 1-2-3 Speak Handheld on the docking station.
2. Open 1-2-3 Speak.
3. Click on File.
4. Click on Export Settings and To Device.
5. When done, Click on Exit and start using your synchronized 1-2-3 Speak Handheld.



1-2-3 Speak® Handheld Registration Form

Fax or mail this form to: CHI Centers, Inc.
Attn: Sonha S. Mason
10501 New Hampshire Ave.
Silver Spring, MD 20903
Fax: 301-4389-8117 Tel: 301-445-3350
TDD: 301-439-5366
Email: Info@1-2-3Speak.com

User Name: _____

Contact Person: _____

Agency: _____

Address: _____

Telephone number _____

E-mail: _____